

# Ann Arbor Orchid Society Newsletter

## AAOS Meeting November 21 1:30 set up, 2:00 meeting

Brenda Oviatt from Botanica, Ltd. In Montana will be our speaker on Sunday. Brenda's presentation will be titled: "Angraecoid Orchids: Keeping a Piece of Nature Alive." She will tell us how to grow these orchids and will show images of species not readily available, that are critically endangered in nature

Brenda will be bringing plants for sale. Welcome to Ann Arbor, Brenda!



### *In this Issue*

November Meeting.....	1
President's Message.....	1
Porter's Orchids Open House.....	2
Orchidwiz Raffle Plus!.....	2
Hospitality Committee.....	2
AAOS Calendar.....	3
Newsletter Deadline.....	3
AAOS Officers.....	3
October Plant Table.....	4
GLJC Bizarre Bazaar.....	5
Holiday Party Information.....	5
All About Orchidwiz.....	6
AAOS Membership Form.....	7

## President's Message

I just got back from giving a talk to the NWMOS in Traverse City. A small group with a dedicated core of volunteers who pretty much do most of the work.

They were looking for volunteers to do a few simple tasks in the upcoming

few months - not one person offered to help! Folks, we are a much larger group, but the core is about the same size! So if you have any time to spare we can really use your help in the upcoming year. Whether it's at shows, meetings, membership or the Festival, please feel free to approach ANY of the board members - no reasonable offers refused!



**-Alex**

# PORTER'S ORCHIDS

Royston Rd. at St. Joe Hwy., Grand Ledge, MI  
Open Tues-Sat, 10 am - 4 pm  
<http://portersorchids.com> 517-622-4188



## Quality Orchids for the Home Environment

Write Sat. Dec. 4rd on your calendar. That's our annual Holiday Open House. We'll be having a special sale on selected Paphs & Phrags. Come early for the best selection and to enjoy a lunch.

### Orchid Wiz Raffle!

As a fund-rasier for the AAOS, we will have a special raffle to be held at the February 13 meeting.

### Orchid Wiz Raffle Plus!!

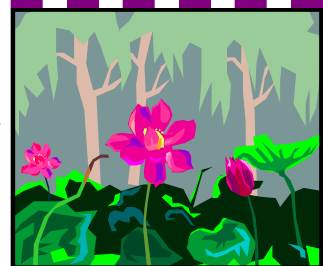
The Grand Prize item in this raffle is the OrchidWiz computer program, donated by the folks at OrchidWiz. (For Orchidwiz highlights, see page 6!)

You can check out the program at [www.orchidwiz.com](http://www.orchidwiz.com) for information on this wonderful program. We will also have some information about it at the next few meetings.

We will also raffle off various items including AAOS shirts, tote-bags and some special orchids. Tickets are \$3 each - there will only be 100 tickets for this raffle!!! Winners of various items will have their tickets replaced so they are still eligible for the Grand Prize drawing!

### Hospitality Committee

Please help out by bringing food or drinks for the Hospitality Table! So that we don't buy more than we need, please email Vivian at [vhl@umich.edu](mailto:vhl@umich.edu) to let her know what you are bringing and how much. Thanks!!!



## AAOS Calendar



**November 21** - Brenda Oviatt, Angraecoid Orchids

**December 12**- Christmas Party at Heidi Jacobus's house. See page 1 for

details.

**January 16, 2011** Harvey Divinigracia - Growing Cattleyas on Windowsills

**February 13, 2011** -Jack Shumaker - Orchid Trip to Borneo

**AAOS Festival - March 18, 19, 20, 2011**

**April 10, 2011** TBA

**May 15, 2011** TBA

**September 18, 2011** Russ Vernon, Odontoglossums

**October 9, 2011** - TBA

**November 20, 2011** - TBA

## Ann Arbor Orchid Society 2010-11 Officers

**President** - Alex Challis 734-971-6186, IcePengwyn@aol.com

**Vice President** - Vivian Lin, 734-741-1984, VHL@umich.edu

**Treasurer** - Abby Skinner 810-231-1741, skinne11@msu.edu

**Secretary** - Denise Nash 248-349-5482, djnash@comcast.net

**Director** - Bob Desoff 734-323-9729 r.desoff@ieee.org

**Director** - April Pedit, 734-646-0572 apedit@mac.com

**Past President** - Paige Hartman 734-864-3718 GEHartman1@msn.com

**Hospitality Queen:** Riki Marquis 248-486-1540 marquisdj@juno.com, and Vivian Lin

**Reception Committee** - Dottie Winter, 734-761-5859, harwin@umich.edu

**Library** - Duane Duman, George Parks. duman2@aol.com

**Membership** - Randy Long, 810-599-0384, Boomerj2@aol.com

**Newsletter Editor** - Denise Nash, 248-349-5482, djnash@comcast.net

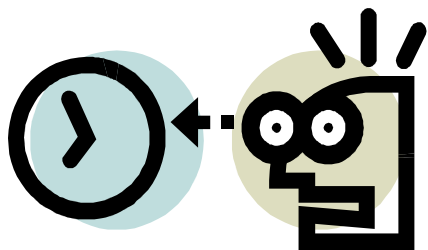
**Orchid Festival** - *We **Need your help!!!!***

**Orchid Shows** - Alex Challis, Paige Hartman, Denise Nash

**Programs** - Paige Hartman, Alex Challis, Denise Nash

**Publicity** - Neal Foster

**Ann Arbor Orchid Society Newsletter** - The AAOS meets monthly from September through May (excluding December) at the University of Michigan's Matthaei Botanical Gardens, 1800 North Dixboro Road, Ann Arbor, MI. at 2:00 p.m., set up at 1:30. The AAOS Newsletter is published 8-9 times throughout the year, and is sent to all AAOS members. AAOS members and others are invited to submit articles or other information relating to orchids. The Ann Arbor Orchid Society is a 501(C)(3) educational and scientific organization, affiliated with the American Orchid Society, the Mid-America Orchid Congress, and with the Orchid Digest Corporation.



### Newsletter Deadline

The next Newsletter deadline is January 8, 2011. Please contribute any orchid related articles to Denise Nash at djnash@comcast.net. There is no newsletter in December.

## Plant Table, October , 2010

19 plants from nine members were on our October plant table. It continues to be somewhat smaller than usual, but still with a good showing of interesting species, as well as some quality hybrids. And we were glad to have former members Bill and Sandy Cleveland return, reinstate, and bring a plant for show.

<i>Ascocenda</i> Blue Tahourdin x <i>Neofinetia falcata</i>		Alex Challis
<i>Bulbophyllum frosti</i>	G-O	
<i>Christonsonia vietnamica</i>		
<i>Psychopsis</i> Mendenhall 'Green Valley'	L	Bill & Sandy Cleveland
<i>Phragmipedium</i> Marybess	W-O	Duane & Laura Duman
<i>Bulbophyllum</i> Doris Dukes	W	Vivian Lin
<i>Paphiopedilum</i> Maudiae 'The Queen'	W	
<i>Cattleya</i> [Slc] Ocelot 'Happy Halloween'	L	
<i>Angraecum</i> Longiscott	L	Riki Marquis
<i>Phalaenopsis</i> [Dtps] Purple Martin	W	
<i>Angraecum infundibulare</i>		Denise Nash
<i>Bifrenaria</i> [ <i>Stenocoryne</i> ] <i>stefanae</i>	G	
<i>Bulbophyllum umbellatum</i>		
<i>Dockrillia</i> ( <i>Dendrobium</i> ) <i>wassellii</i>		
<i>Epidendrum longicaule</i>		
<i>Paphiopedilum</i> Pinocchio (x sib)	W-O	Abby Skinner
<i>Aliceara</i> Sunday Best 'Muffin'	W-O	Larry Walton
<i>Coelogyne ovalis</i>	L-O	Harry & Dottie Winter
<i>Dendrobium oligophyllum</i>	L (RP)	
<i>Paphiopedilum</i> Lutin Vert	L	

Conditions: G, greenhouse; L, Lights; W, Windowsill; O, outdoors in summer; RP, recent purchase (in spike or flower). Names in brackets are the synonyms under which they were labeled.

Harry Winter

## The Great Lakes Judging Center Bizarre Bazaar

The Great Lakes Judging Center members would like to extend an invitation for you to join them for their annual December Gala Saturday, December 18th, Matthaei Botanical Gardens, starting at 11:00 am.

Something for everyone...

Educational: with a great talk by Ron Williams, Cincinnati judge, on how to use orchid colors to their best advantage.

Gastronomical: with a fantastic potluck buffet lunch provided by our gourmet judges.

Inspirational: The Bizarre Bazaar, an auction, featuring plants, books, holiday goodies, and...?

Bring a plant for judging and watch the process, which will follow the lunch and auction, also bring your appetite, and checkbook. Proceeds from the auction support the Judging Center.

The cost is free, but please R.S.V.P. if you're coming so we can plan for food.

Contact Glenda Lask for additional information 248-851-3835 or [glendalask@sbcglobal.net](mailto:glendalask@sbcglobal.net)

Volume 18 Issue 8



## Holiday Party

Sunday, December 12, 1:00 pm.  
432 Riverview Dr,  
Ann Arbor 48104

The Holiday Party will be at Heidi Jacobus's house just off Geddes Ave., near the Huron River. From Huron Parkway, take East Huron River Dr. under the Huron Parkway bridge on the south side of the river. The road becomes Geddes as it curves to the left and goes uphill. Riverview is the first right, but can easily be missed. From downtown Riverview is the first left after Apple Way. Once on Riverview, the road has a sweeping curve to the left, followed by a sharper curve to the right. Heidi's house is on the left side, up on a hill.

There's always lots of good food at our parties, so please bring a dish to pass, along with the recipe if homemade, so we can put some of them in the newsletter. Also please bring an orchid or two in bloom for the display table. We will be having a free raffle, so extra divisions of orchids, and orchid related products are most welcome.



November 2010

# What is OrchidWiz



OrchidWiz is an easy-to-use software application for orchid research, discovery and to help growers keep track of their orchids. It was designed with three primary goals in mind: (1) Ease-of-use; (2) Accuracy; and (3) Completeness.

OrchidWiz is so intuitive that anyone who can use a computer mouse can benefit from it. There are thousands of OrchidWiz aficionados around the world. Many world-class institutions use OrchidWiz for their basic research needs, i.e., Selby Gardens, the Smithsonian Greenhouse and the Singapore Botanic Gardens. More than 200 orchid nurseries and 330 Orchid Society judges have licensed OrchidWiz, another testimony to its breadth and accuracy.

## Discover Orchids



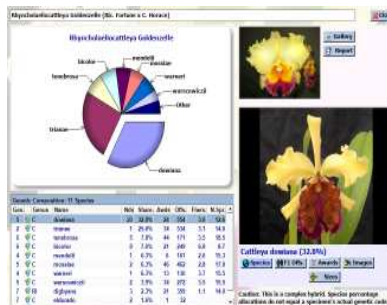
- Inventory and track your own orchids in the OrchidWiz Journal

Volume 18 Issue 8

- Add your own photographs into the Journal.
- Almost 40,000 color photographs of orchids.

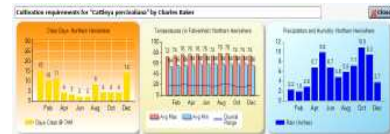


- Photographic references for almost 16,000 species.
- Look-up orchids by new taxonomic names or by older more familiar Sander's names
- Information on more than 29,000 species.
- Genealogy charts for more than 127,000 hybrids.



- 16 distinct breeding groups provided for ease of search and analysis.

- Geographical distributions of over 26,000 species.
- Month-by-month flowering times for more than 5,300 species.
- Data from 2,649 Charles Baker cultivation sheets displayed in graphical form.



- Light intensity and night temperature recommendations for 4,100 species.

Awards	Flwr Qual:	Culture:	Other:
2	2		
<b>Averages</b> Flowers Per Stem: 1.0 Natural Spread: 8.9 cm. Petal Spread Vert: 8.8 cm. Dorsal Sepal W: 2.4 cm. Dorsal Sepal L: 4.9 cm. Petal Width: 4.3 cm. Total Length: 4.8 cm. Lat/Syn Sepal W: 2.3 cm. Lat/Syn Sepal L: 4.7 cm. Lip or Pouch W: 4.3 cm. Lip/Pouch L: 3.7 cm.			

- Award data from the AOS, CSA, AOC, and the OCNZ, a total of more than 73,000 awards.

## Excited about Orchids

“I have observed an interesting reaction in myself since I started using OrchidWiz to inventory my collection. . . I am actually getting EXCITED again about my orchids in a way I haven't felt in awhile.” –Cynthia Hill

November 2010

## Ann Arbor Orchid Society Membership Form

Name:

Address:

City/State/Zip:

Phone (Home):

Phone (Work):

E-mail:

\_\_\_\_\_ Individual (\$20)

\_\_\_\_\_ Senior Individual (\$15)

\_\_\_\_\_ Household (\$25)

\_\_\_\_\_ Senior Household (\$20) Senior rates apply for those 70 and over.

An extra donation is suggested if your newsletter is to be mailed rather than emailed to you. Your donation will help cover the extra cost of printing and mailing your copy. Please place donations in the box on the hospitality table. Thank you for your cooperation.

New Membership

Renewal

New Address

Beginner

Advanced Grower

Commercial Grower

What is your growing environment?

Greenhouse

Artificial lights

Windowsill

Other \_\_\_\_\_

Would you like to receive you newsletter via email only? Yes No

Member of the American Orchid Society? Yes No

Member of the Orchid Digest Corporation? Yes No

Please make checks payable to the Ann Arbor Orchid Society. You may bring this application to any meeting, or mail it to: AAOS Membership, P.O. Box 3006, Ann Arbor, MI 48106-3006